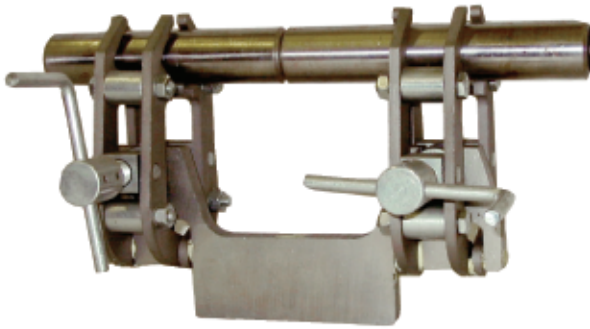
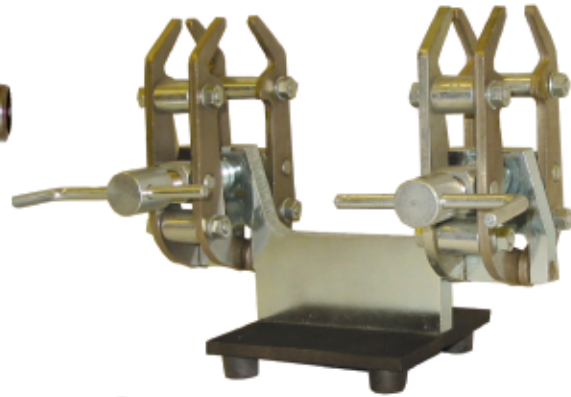


Small Diameter Clamps

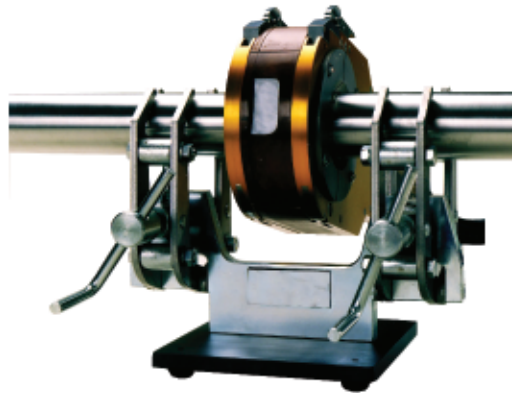
Accu-Fit Clamps



Accu-Fit Aligning
Pipe



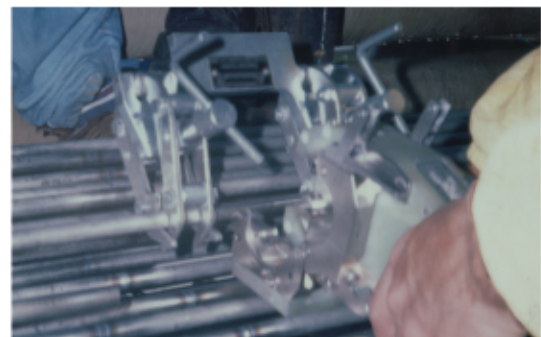
Accu-Fit with
Accu-Fit Stand
D240-ST



Orbital Welder on
Accu-Fit w/ Accu-Fit Stand
D240-ST

No Clamp makes a more clean and precise alignment of small diameter thin wall pipe and tubes than the Accu-Fit Clamp. Made of high-purity stainless steel, the Clamp aligns the pipes or tubes so that the welder can complete flawless welds. The Jaws of the Clamp work independently of each other so pipes or tubes can be aligned concentrically to each other regardless of diameter. The Clamp offers sufficient clearance for most Orbital-Welding Heads. The Clamp will align pipe to Schedule 20 and is ideal for GTAW welding; also useful for GMAW and other types of welding.

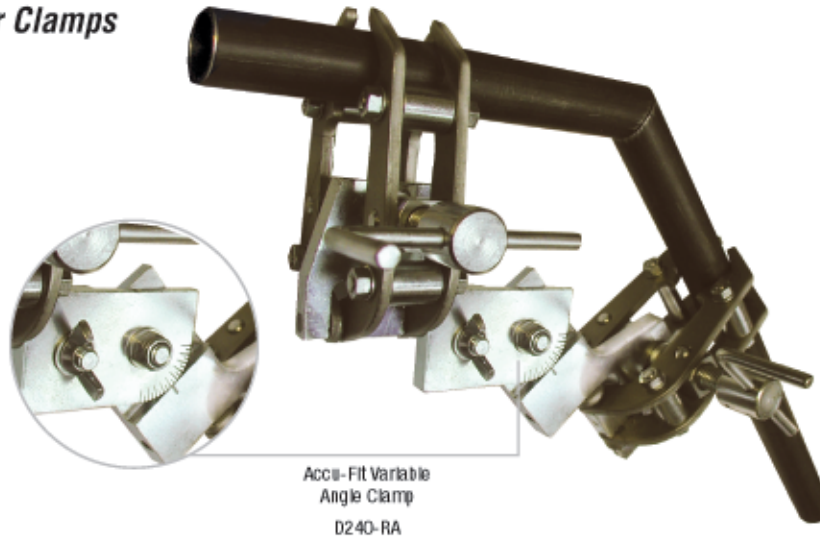
- **ACCURATELY ALIGNS** pipes for orbital welding.
- **CLEARANCE** between jaws for most orbital welders.
- **CONTAMINATION** - High-purity stainless steel for the alignment of stainless steel and other specialty alloys.



A miniature version of the Dearman Classic Clamp, the Mini-Fit Clamp, is small enough to fit in the welder's tool box, yet tough enough to align pipes to Schedule 30.

Small Diameter Clamps

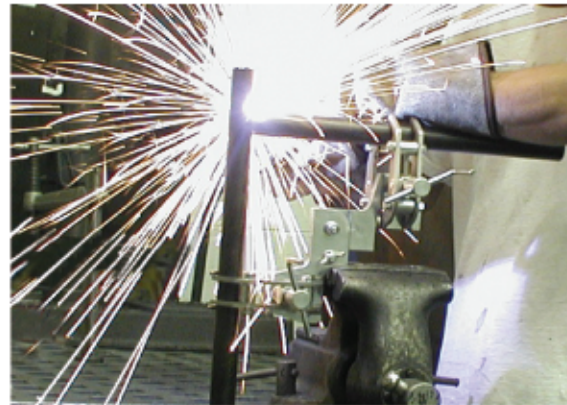
Angler Clamp



Angler has all of the sensational features of the Accu-Fit *plus* the ability to align small diameter thin wall pipe and tubes at angles to 90 Degrees included. Degree Indicator, located on the base of the clamp, is graduated in 5 Degree increments. The angler aligns pipes, tubes and fittings 3/8" to 2 3/4" / 9 to 113mm in diameter with a wall thickness not to exceed Schedule 20.

When the angle of clamping is set on Zero (0), the Accu-Fit Stand may be used to stabilize the clamp.

NOTE: To insure accurate aligning, the alignment of the pipes or tubes should always be checked with a Mathey Dearman Protractor.



The Accu-Fit Angler allows pipes to be aligned and held in position for welding at any angle up to 90 Degrees included.

Accu-Fit and Accu-Fit Variable Specifications

Part Number	Pipe Size Range (in./mm)	Distance between Jaws (in./mm)	Distance from Base to Center of Jaws (in./mm)	Estimated Shipping Weight (lbs./kg)
D240 (Stainless Steel)	3/8-2 3/4 / 9-61	2 7/8 / 73	3 9/16 / 90.5	5 / 2
D240-RA (Stainless Steel)	3/8-2 3/4 / 9-61	2 7/8 / 73	3 9/16 / 90.5	6 / 2
D240-2 (Stainless Steel)	2-4 1/2 / 51-114	4 7/8 / 121	5 1/4 / 133	14 / 6
Accu-Fit Stands				
D240-ST	Stand for D240			2 / 1
D240-2-ST	Stand for D240-2			2 / 1
D240-RA	Stand for D240-RA			2 / 1

NOTE: Clamp is designed to align the pipe or tubing ends and NOT to be used to support the weight of the pipe, tube or fitting.